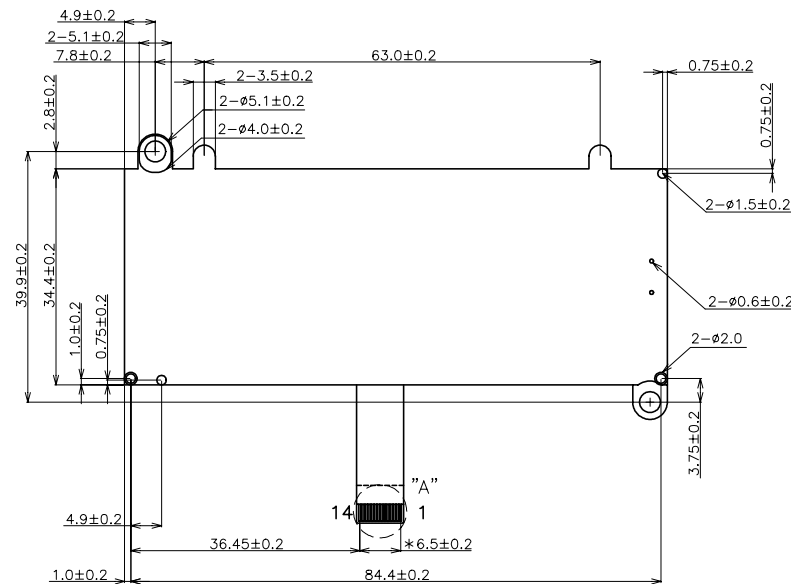
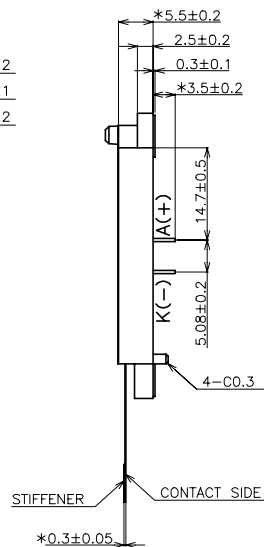
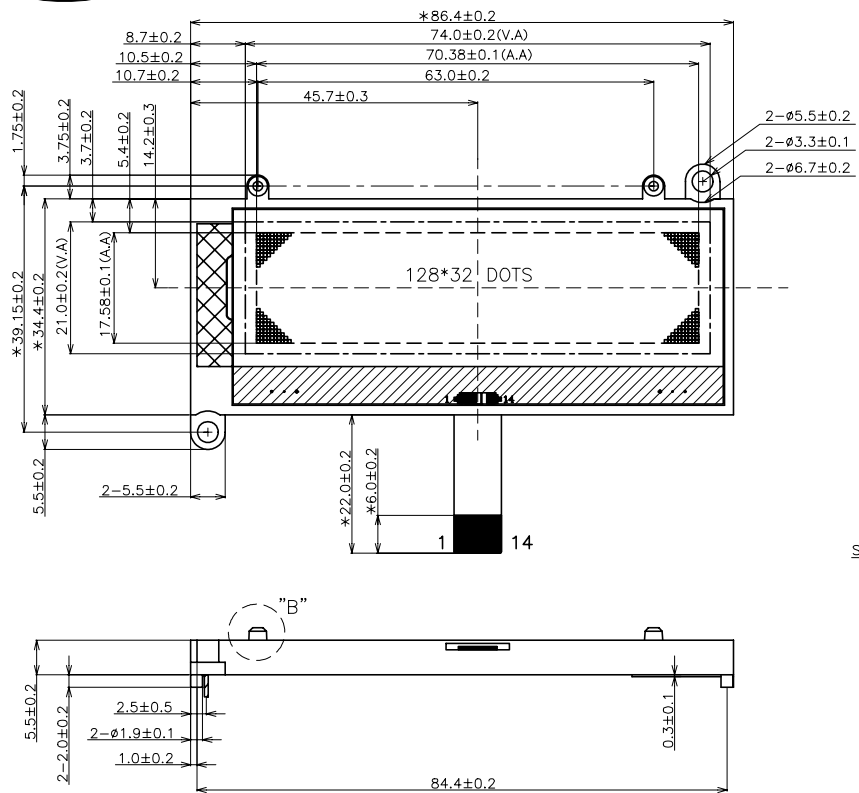
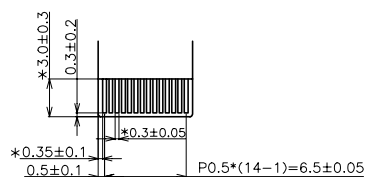


HSF

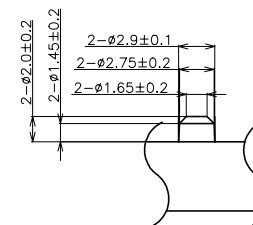
VIEWING DIRECTION(12H)



DETAIL A:



DETAIL B:



- NOTE:
1. DISPLAY TYPE:FSTN
 2. DRIVING METHOD: 1/32 DUTY, 1/7 BIAS
 3. OPERATING VOLTAGE: $V_0-V_{SS}=6.2V$; $V_{LED}=3.0 \sim 3.6V$
 4. OPERATING TEMP: $-10^\circ \sim 60^\circ C$
 5. STORAGE TEMP: $-20^\circ \sim 70^\circ C$
 6. VIEWING DIRECTION: 12 O'CLOCK
 7. POLARIZER MODE: TRANSFLECTIVE/POSITIVE
 8. CONNECTION: BL+FPC(小片在上 磨邊)
 9. CONTROLLER IC:ST7588
 10. LED BACKLIGHT COLOR:WHITE
 11. DIMENSIONS ARE IN MILLIMETERS AND UNLESS OTHERWISE NOTED ARE $\pm 0.20MM$
 12. THE TOTAL THICKNESS OF GLASS IS NOT INCLUDING THE PROTECTIVE FILM.

REVISES		SUN-VIEW TECHNOLOGY CO., LTD						
CONTENT								
02	增加重點尺寸標示	CUSTOM					PROJECTION	
		DRAWING BY	沈光娥	2018.11.21	ITEM	MD	UNITS	mm
		CHECKED BY			CODE	MDO10415005	SCALE	
		APPROVED BY			MODEL	SVG128032HWDC	SHEET	1 OF 1